



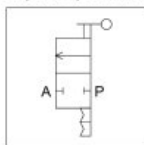
# Hand Valve - Shut-Off Valve (On-Off 2 way, 3 way)

## Characteristics

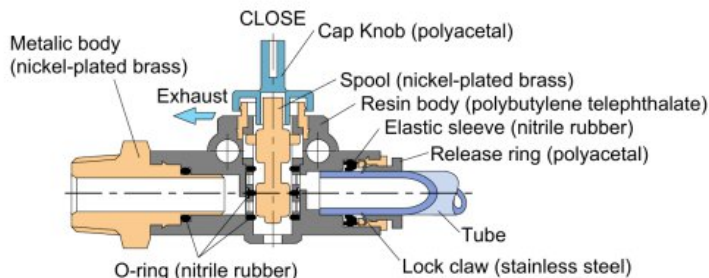
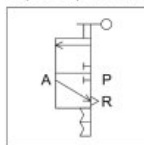
- The Hand valve (shut-off valve) turns on and off air pressure to a pneumatic device or a circuit.
- The three way, pressure relief type isolates the supplied air pressure and exhausts the downstream pressure for maintenance purpose while the two way type holds the downstream pressure.
- 4 types are available to fit the application requirement.

## Construction

2-way valve  
Graphical representation



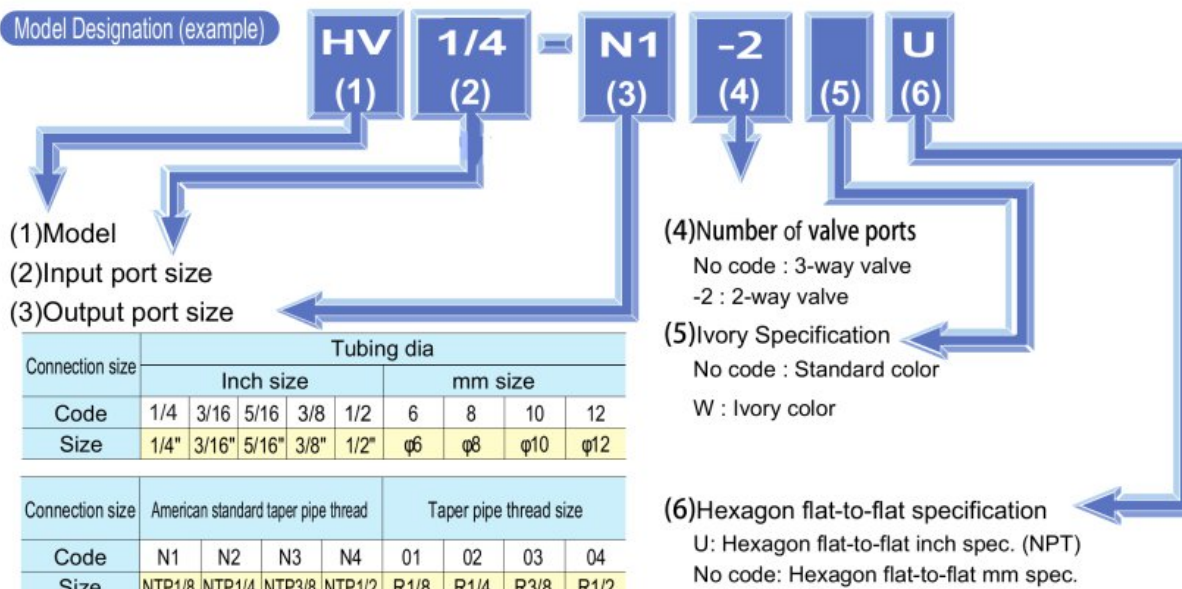
3-way valve  
Graphical representation



## Specification

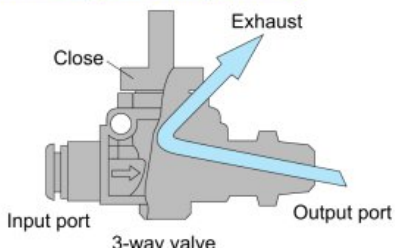
Fluid admitted	Air	
Service pressure range	0~131psi	0~0.9MPa
Working vacuum	-29.5in. Hg	-100KPa
Service temperature range	32~140°F	0~60°C

## Model Designation (example)



❖ R thread is same as BSPT

## About 3-way and 2-way Valves



- The three way valve releases the residual pressure from the downstream (connected devices) when turning off. It is necessary to protect the systems against malfunction or decrease the pressure so the systems may be maintained. The two way valve holds the pressure so it is ideal for the application where the residual pressure maintained such as an air tank or some vacuum system.

